

Corporate Overview

Manufacturing That Eliminates Risk & Improves Reliability

January 2026

America's Oldest, a History of Innovation

- ▶ Privately held company, established in 1952.
- ▶ Estimated 2025: Sales: US\$90 Million (\$46M in 2020)
- ▶ 218 employees worldwide
(170 – North America, 36 – Asia, 12 – Europe)
- ▶ Experts in custom, build-to-print, performance-critical electronic products across all sectors
- ▶ Core offerings: PCBs (rigid, flex, rigid-flex), custom battery packs, energy efficient fans & motors, cable assemblies, CNC machining, RF/microwave filters, flexible heaters, and high reliability SMART user interfaces
- ▶ Integrated supply chain management solutions to handle the complexity of today's global marketplace while making sure that every order is being manufactured at the “right” factory.

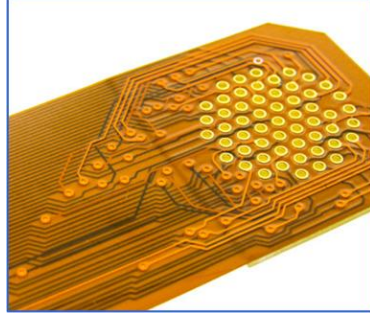
70 | **YEARS**
DELIVERING QUALITY &
RELIABILITY SINCE 1952.

Our Products

Custom Battery Packs



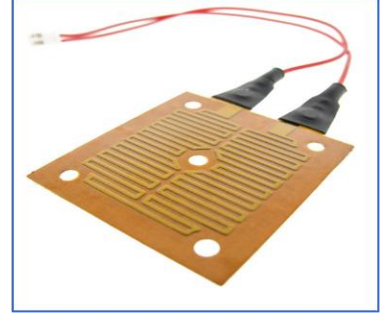
Flex & Rigid-Flex PCBs



High Reliability SMART User Interfaces



Flexible Heaters



Energy Efficient Fans & Motors



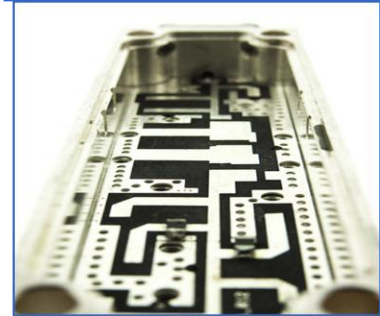
Printed Circuit Boards



Cable Assemblies



CNC Machining



New Bedford, MA

- Corporate HQ
- US Warehousing
- Engineering Lab
- Battery Production
- Cable Assembly
- Test and Inspection Lab
- Quality Management
- User Interface Mfg
- Product Management
- CAD/CAM Engineering
- RF Development Lab
- HALT/HASS Testing
- Fan Assembly
- FAA/DOT Certified Battery Shipping

Dallas, TX

- PCB Manufacturing
- ITAR & Military
- Rigid, Flex and Rigid-Flex

Southbridge, MA

Machining Center

- Milling
- Turning
- High Speed Drilling
- Boring
- CNC and Manual Ops

Global Operations

Merthyr Tydfil, Wales, UK

- Fan Development Lab
- EU Warehousing
- Motor Mfg & Test Facility

Shenzhen, China

- Logistics & Mfg Center
 - Battery Packs
 - PCBs – Flex & Rigid
 - Cable Assemblies
 - User Interfaces
 - Flexible Heaters
 - Fans & Motors
 - CNC Machining
- Quality Management
- CAD/CAM Engineering
- Asia Sales Office and Warehousing

Taoyuan, Taiwan

- PCB Production
- Quality Management

Hong Kong

- Shipping Consolidation Operations Center

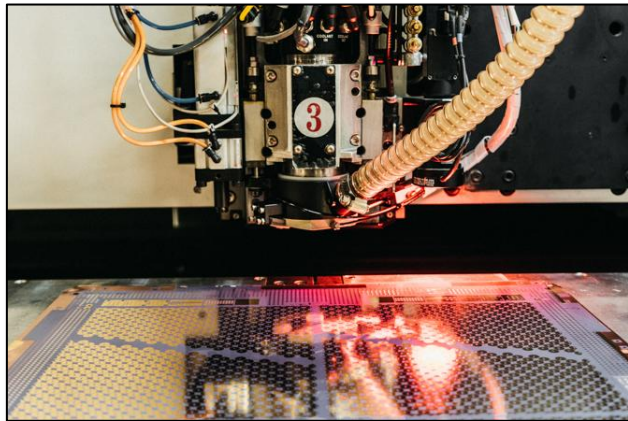
Penang, Malaysia

- PCB Manufacturing

NetVia Group – Dallas, TX



- ▶ High Technology PCB Manufacturing
- ▶ 85 Employees
- ▶ ITAR Certified – CMMC Level 2
- ▶ Rigid PCB's Up to 30 Layers
- ▶ Flex & Rigid Flex
- ▶ Embedded Resistors



Metal Craft Machining – Southbridge, MA



- Tight tolerance milling & turning
- Medium Volume Production
- ITAR Certified
- 5-Axis Milling
- Surface Finish and Assembly
- Reliable Low-Cost Manufacturing
- Full CMM Capabilities
- Dual-Spindle Turning Centers



EC Fans & Drives – Wales, UK

- Leading global manufacturer of motors for commercial refrigeration
- Specializing in energy-efficient EC motors
- Trusted supplier to 7 of the top 10 Global commercial fridge OEMs
- Expanding into energy-efficient industrial applications



ECY-15 Series Motor



ECY-30 Series Motor



ECY-45 Series Motor



ECY Crossflow



ECY Agitator Motor



EFS Fan Pack

Real Investment In Asia Since 2003

► Shenzhen China Operation Includes:

- General Manager
- Quality Manager
- Engineered Products Manager
- Logistics Supervisors



- 30 dedicated staff in logistics, quality, engineering, and procurement to drive speed and precision
- IPC-certified Epec inspectors stationed at every facility
- Senior Epec leadership on-site every 6 weeks for oversight and alignment

Our Customers - The Top Global Companies in Growth Industries

ABIOMED



Schneider
Electric



SPARTRONICS™



MSA
The Safety Company



NORTHROP
GRUMMAN



JABIL



tyco
Fire Protection
Products



Hypertherm
SHAPING POSSIBILITY™

True

Honeywell



TESLA



AMETEK



Johnson
Controls



BEVERAGE-AIR

ASHCROFT™
Trust the Shield™



COBHAM

Traulsen



LOCKHEED MARTIN

COOPER



Raytheon
Technologies



THE BRAND YOU TRUST

UKG

HALLIBURTON



SANMINA



HILLMAN

LINCOLN
ELECTRIC



Medtronic

BLUEHALO



thyssenkrupp



APC
by Schneider Electric

Hitachi Rail STS

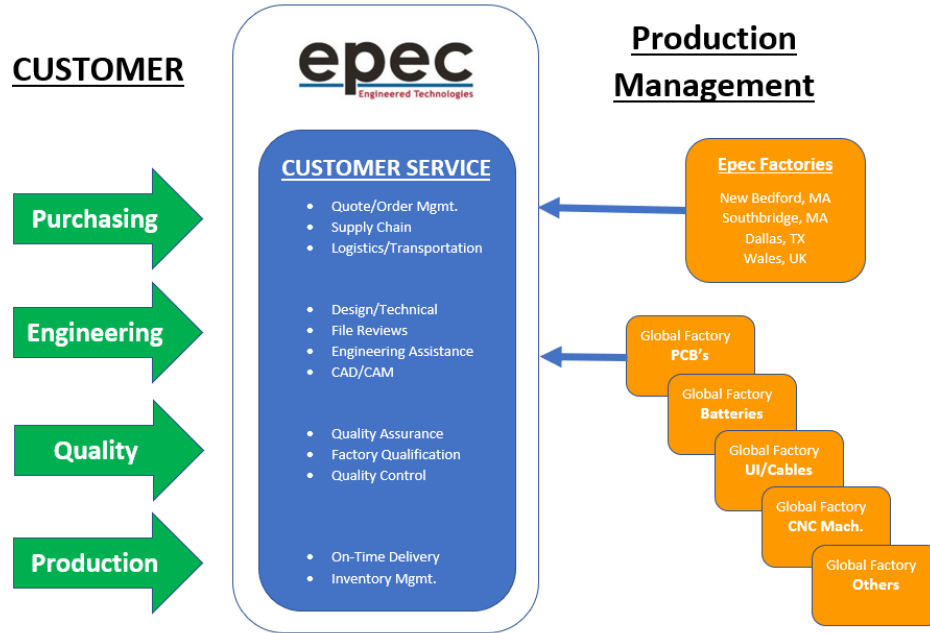
epec
Engineered Technologies

Manufacturing That Eliminates Risk & Improves Reliability

Who Are We?

Epec Engineered Technologies designs and manufactures custom build-to-print electronics. Our solutions provide a **cost savings, technical resource or delivery advantage for our customers.**

Proven Business Model - Hybrid Manufacturer



- ▶ Hybrid Mfg Model = Maximum Flexibility
- ▶ Optimized Cost, Proven Quality
- ▶ Capacity Without Overhead
- ▶ Risk Mitigation and Continuity of Supply
- ▶ Strategic Control + Global Reach

With owned core manufacturing and integrated global partners, Epec delivers local responsiveness with global cost efficiency.

How We Get You to Market Faster!

Traditional

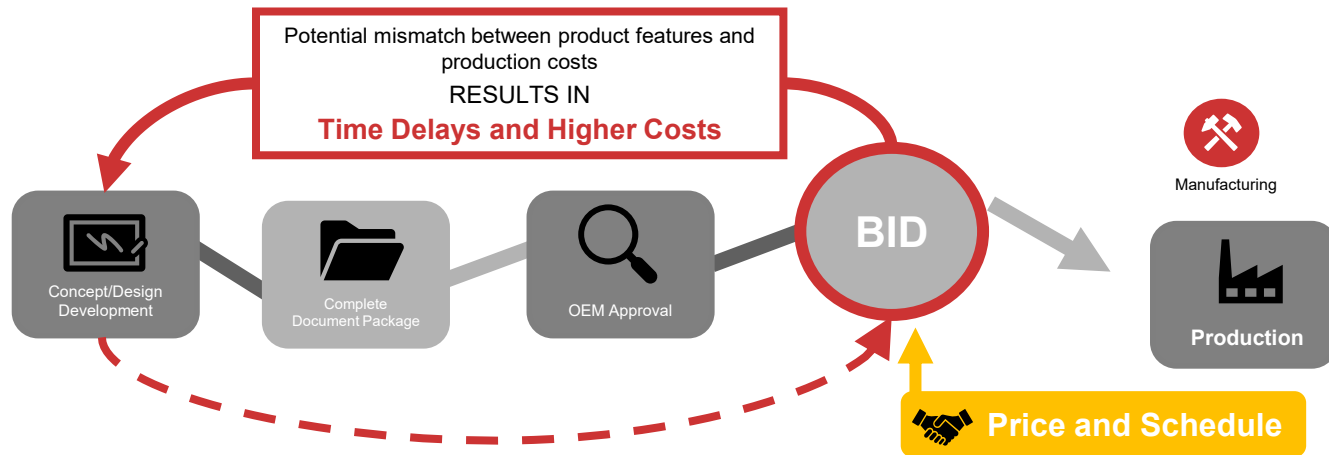
Design-Bid-Production Process



OEM



Design



EPEC

Design-Production Process



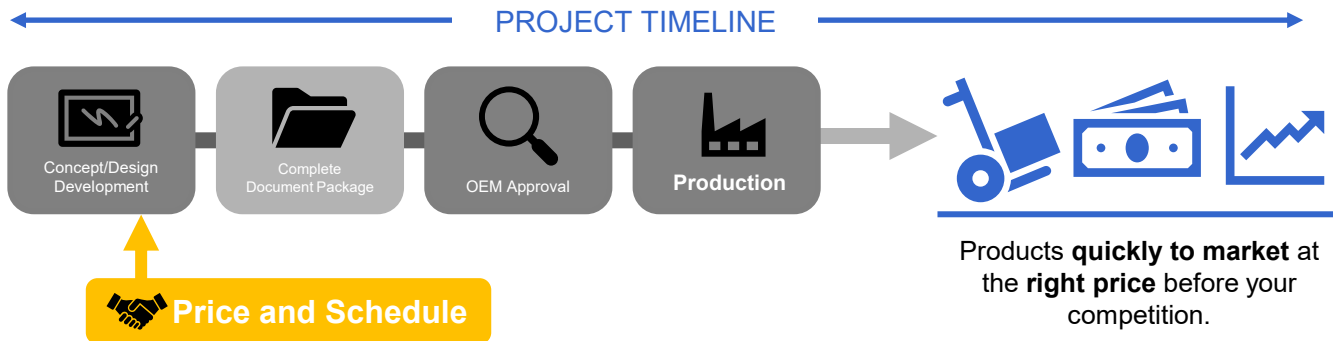
OEM



Design



EPEC



We Manage All of the Pieces of the Puzzle.

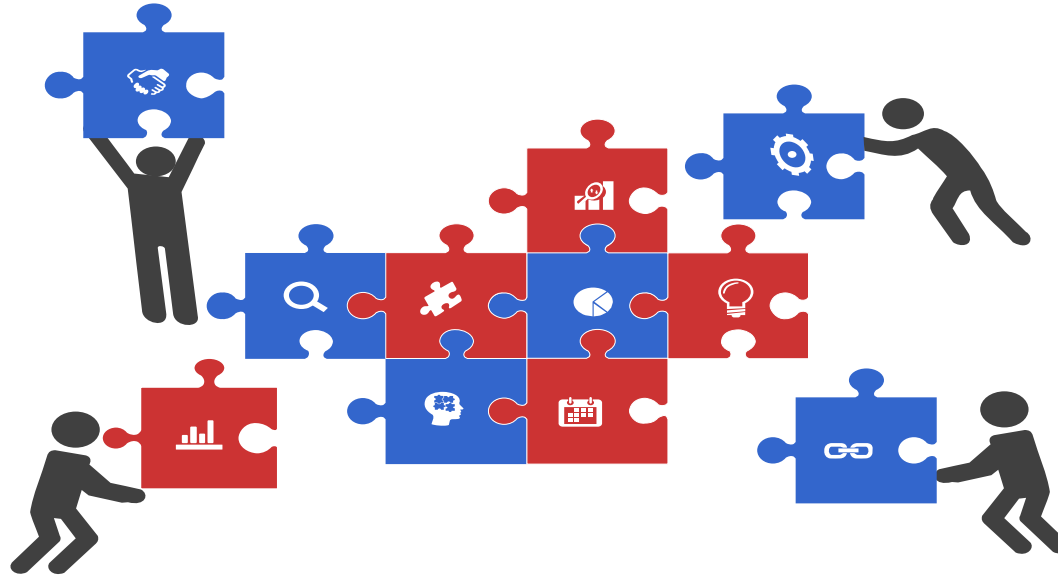
Utilizing our in-house technical teams, we manage all the details to help our customers get to market faster.

Design

Mechanical/Electrical
PCB Schematic & Layout
Custom Enclosures
Hard & Soft Tooling
Production Fixtures
Embedded Software/Firmware
Functional Test Programs
Design for Manufacturability(DFM)

Supply Chain

Vetted Global Factory Network
Strategic Asia Investments
Supplier Management
Component Lifecycle Mgmt.
ERP/Inventory Planning
Cost Leverage
Software/Firmware Maintenance



Manufacturing

U.S. Manufacturing Facilities
Strategic Asia Mfg Partnerships
Cost Control Strategies
Test Protocols & Fixtures
Quality & Compliance Oversight
Prototypes/Pre-Production
Engineering Change Management
Product Lifecycle Mgmt.(PLM)

Certifications

UN 38.3/DOT Certified
UL/IEC Compliance
ITAR Registered
FDA/FAA Approved
ISO9001 & ISO27001
CMMC Level 2 Compliant
Many Others

Design Centers & Technical Support

- ▶ Battery Pack & Power Management – ***New Bedford, MA***
- ▶ SMART User Interfaces – ***New Bedford, MA***
- ▶ Fans & Motors – ***Wales, UK***
- ▶ PCBs – ***New Bedford, MA & Shenzhen, China***
- ▶ Flex & Rigid-Flex – ***Dallas, TX***
- ▶ Cable Assemblies – ***New Bedford, MA***
- ▶ Flexible Heaters – ***New Bedford, MA***
- ▶ ITAR PCB Manufacturing – ***Dallas, TX***
- ▶ CNC Machining – ***Southbridge, MA***



Our engineering and design teams are ready to help our customers create world-class and cost-effective product solutions.

Inventory Management

- ▶ Customer requirements are always unique and customized; therefore, our inventory management system must accommodate for this type of environment.
- ▶ We Offer:
 - Kanban
 - Consignment
 - JIT Programs
 - Blanket Orders
 - Customer Fulfillment
 - Bonded Warehousing
 - Kitting
 - Safety Stock
 - Other Flexible Solutions



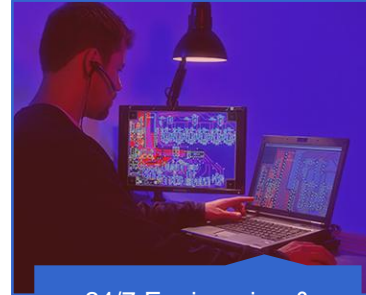
The Numbers Tell Our Story...



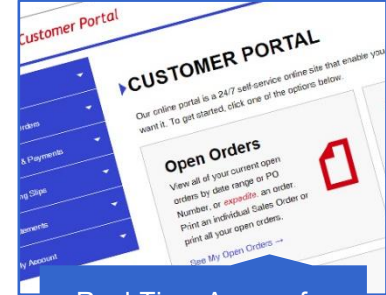
2,500 Active Customers



Produce Over 20,000 Part Numbers/Year



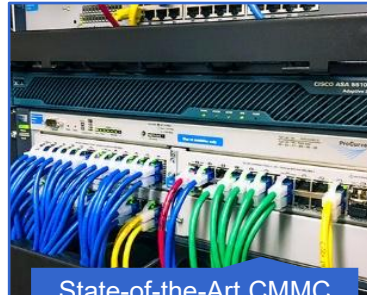
24/7 Engineering & Technical Assistance



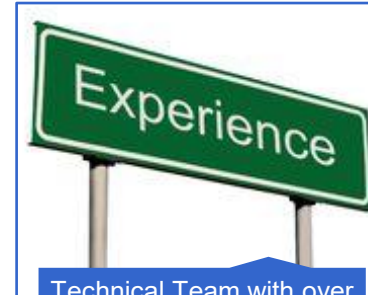
Real-Time Access for Customers



Manage Over 500 NPI Projects Every Year



State-of-the-Art CMMC Compliant IT Infrastructure



Technical Team with over 30 Years of Product Experience

The Difference is Measureable

1. **Faster Delivery** - With 24/7 global operations across the U.S. and Asia, Epec can launch jobs the same day an order is received—no delays, no downtime.
2. **Smarter Design** - Our expert engineering team helps reduce unit cost, lower risk, and accelerate time to market through industry-leading engineering support.
3. **Proven Quality** - We invest in every phase of quality—from a 30+ person team in Asia to cutting-edge test labs and ongoing process audits—to deliver consistent results.
4. **Built-In Flexibility** - Each facility is chosen for its unique strengths, ensuring every order is built in the location best suited for performance, delivery, and value.



TS-16949	ISO9001	ISO14001	ISO13485	AS9100
Certified	Certified	Certified	Certified	Compliant

Thank You

Check out our website at www.epectec.com.
For more information email sales@epectec.com.

Stay Connected with Epec Engineered Technologies

Follow us on our social media sites for continuous technical updates and information:

