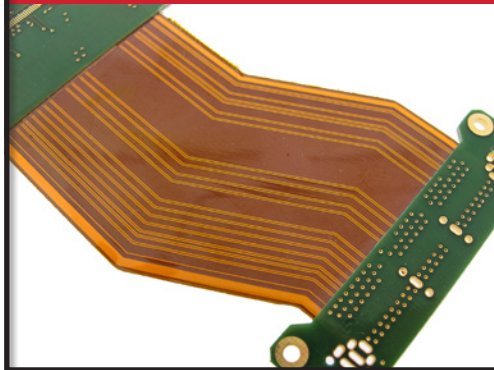


## MANUFACTURING THAT ELIMINATES RISK & IMPROVES RELIABILITY

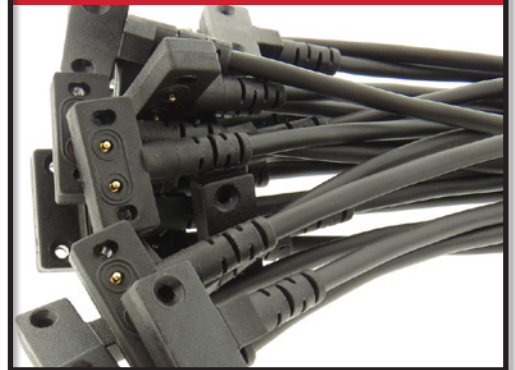
BATTERY PACKS



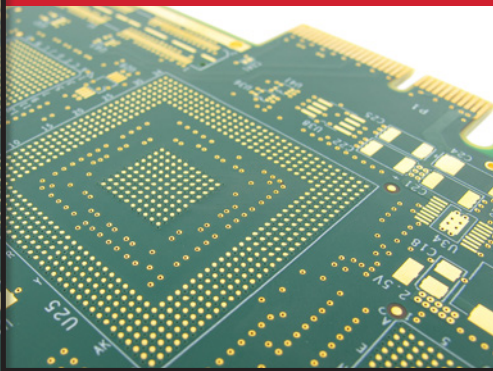
FLEX & RIGID-FLEX PCBs



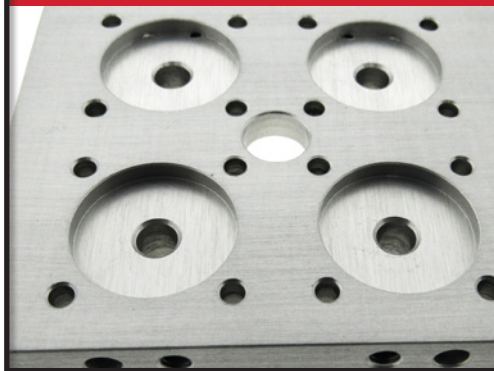
CABLE ASSEMBLIES



PRINTED CIRCUIT BOARDS



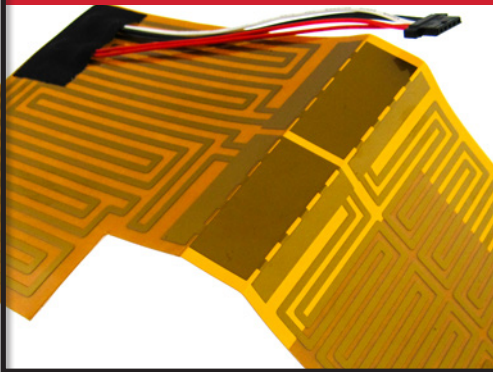
CNC MACHINING



USER INTERFACES



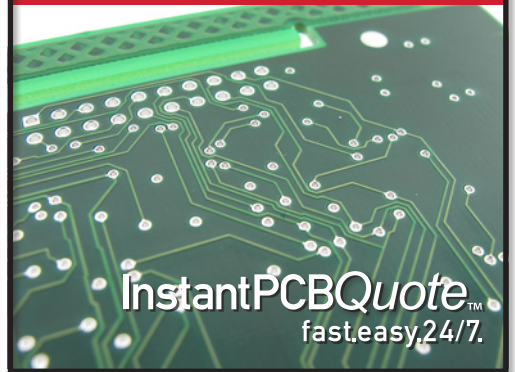
FLEXIBLE HEATERS



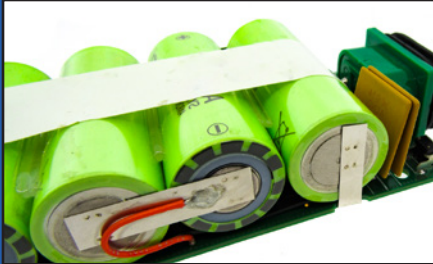
FANS & MOTORS



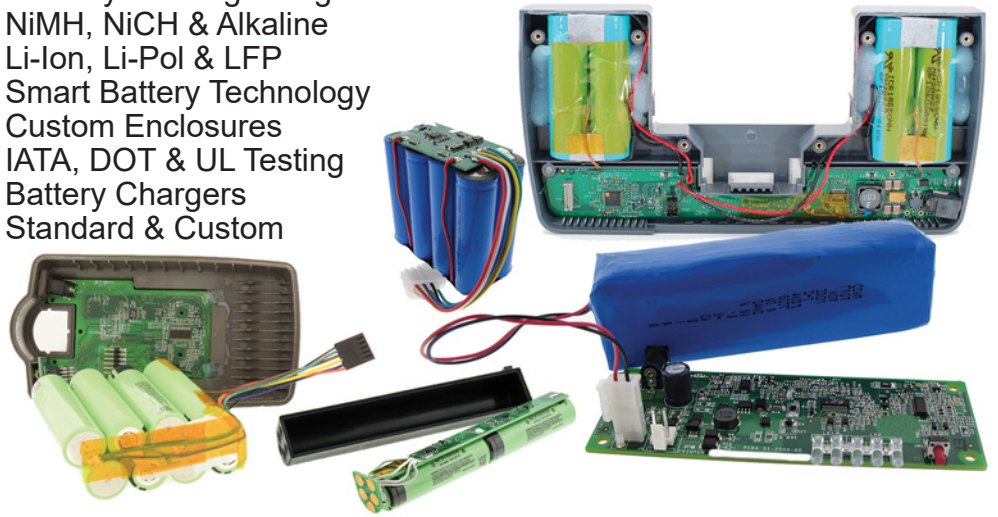
InstantPCBQuote™



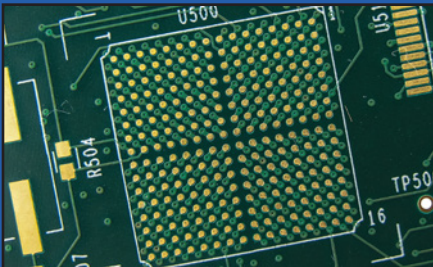
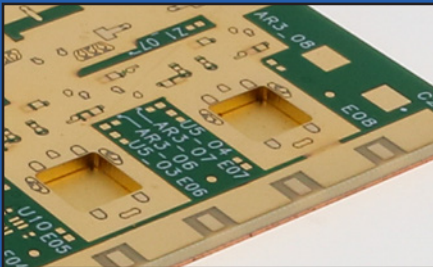
## BATTERY PACKS



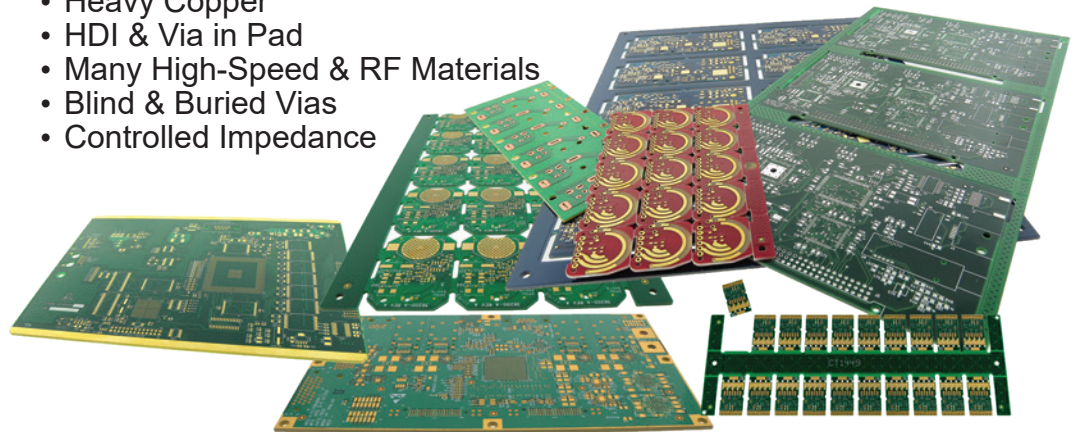
- Industry Leading Design Team
- NiMH, NiCH & Alkaline
- Li-Ion, Li-Pol & LFP
- Smart Battery Technology
- Custom Enclosures
- IATA, DOT & UL Testing
- Battery Chargers
- Standard & Custom



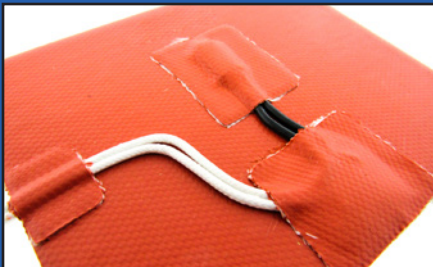
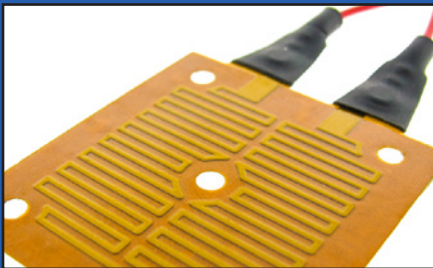
## PRINTED CIRCUIT BOARDS



- Leader in Quick-Turn PCBs
- Up to 40 Layers
- Fine Lines & Spaces
- Heavy Copper
- HDI & Via in Pad
- Many High-Speed & RF Materials
- Blind & Buried Vias
- Controlled Impedance



## FLEXIBLE HEATERS

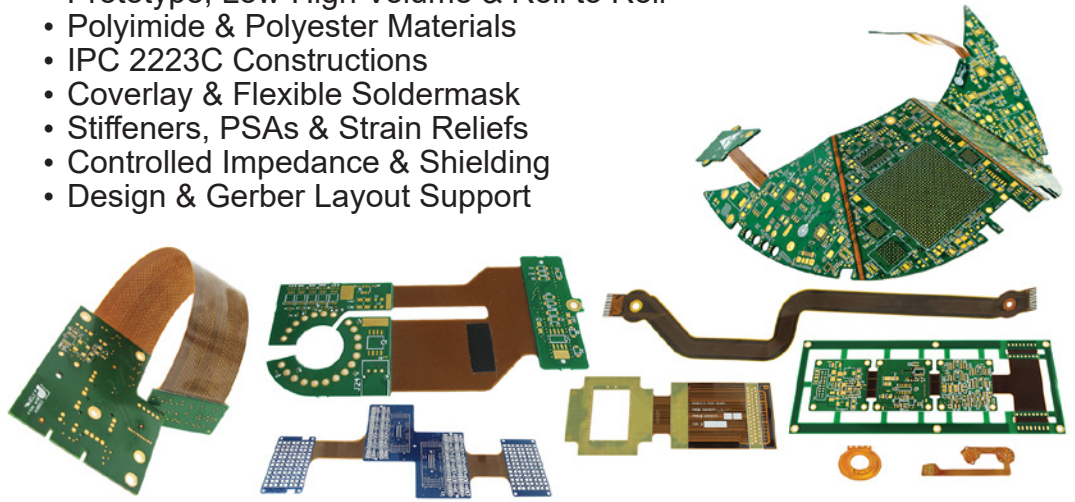
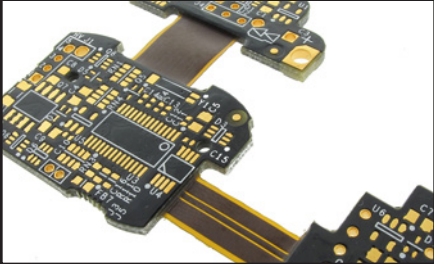
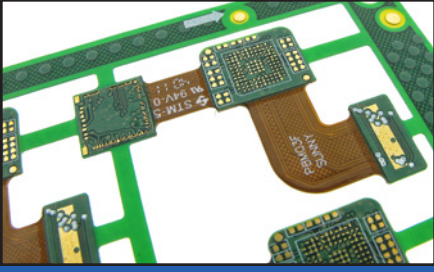


- Polyimide (Kapton®) Heaters
- Silicone Rubber Heaters
- Integrated Components
- Wide Array of PSAs Available
- Design Assistance & DFM
- Quick Turn & Standard Delivery



## FLEX & RIGID-FLEX PCBs

- Prototype, Low-High Volume & Roll to Roll
- Polyimide & Polyester Materials
- IPC 2223C Constructions
- Coverlay & Flexible Soldermask
- Stiffeners, PSAs & Strain Reliefs
- Controlled Impedance & Shielding
- Design & Gerber Layout Support



## CNC MACHINING

- 4 & 5-Axis CNC Milling and Turning
- USA and Asia Facilities
- Machining, Surface Finishing, and Assembly
- Metal and Plastic Materials
- Inventory Management Programs



## FANS & MOTORS

- Industry Leader in High Efficiency Low Power Fans
- Fan Pack Assemblies with Ring & Blade (Steel or Plastic)
- EC Axial (Computer) Fans
- EC Refrigeration Motors
- Cross Flow Blowers
- Variable Speed EC Motors



# CABLE ASSEMBLIES

- In-House UL Cable & Connector Manufacturing
- ITAR, AS9100, ISO 13485
- Custom Overmolded Cables
- Braided & Foil EMI Shielding
- Force Pull & Flex Testing
- IP Rated Cables



# HIGH RELIABILITY USER INTERFACES

- Fully Integrated Embedded Systems
- SMART Human-Machine Interfaces
- Capacitive Touch Membrane Switches
- Software & Firmware Development
- Guided Backlight Films
- LCD/Touch Screen Integration
- Concept, Design & Production



# InstantPCBQuote™

- Online PCB Quote & Ordering Solution
- No Tooling & Test NRE Charges on ALL Orders
- Up to 16 Layers
- 170 Tg & 180 Tg Laminates
- Multiple Surface Finish Options
- 3 oz Copper & Above
- Design Rule Checks on ALL Orders
- Flex Circuit Quote & Ordering Up to 4 Layers

**epec** InstantPCBQuote.™  
Engineered Technologies fast. easy. 24/7.

(888) 995-6171 | sales@epectec.com

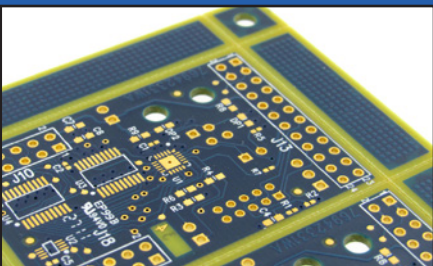
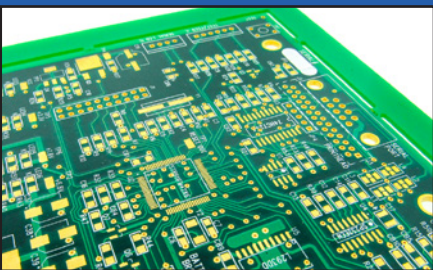
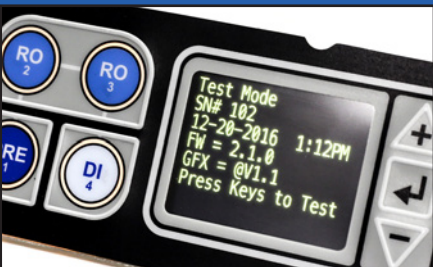
Need Assistance?

Build a Rigid PCB Quote | Build a Flex PCB Quote

Quote & Order History

Search by Quote No. [ ] [What do you want to Search for?] [Search]

View Quote	Active	Data Files	Type	Quote No.	Part No./Rev	Owner	Date Modified
[ ]	[x]	[ ]	Rigid	113148	993257 / A	demo-user1	
[ ]	[x]	[ ]	Rigid	113147	643289 / B	demo-user1	2023-09-28 14:08
[ ]	[x]	[ ]	Rigid	113146	843217 / A	demo-user1	2023-09-28 14:07
[ ]	[x]	[ ]	Flex	113150	430712 / A	demo-user1	2023-09-28 14:07

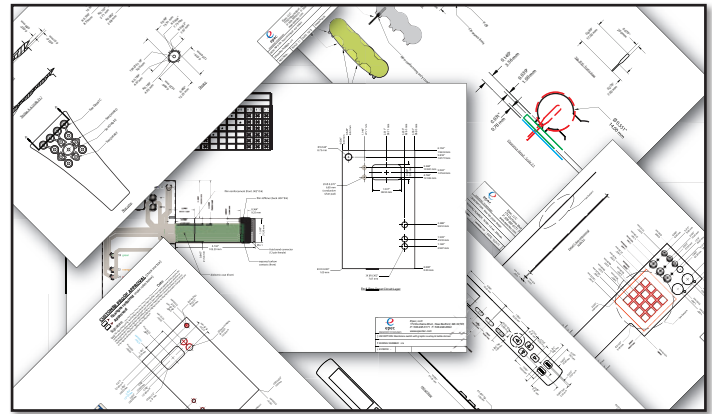


## DESIGN SERVICES

Our technical staff will work with you to generate material specifications, product renderings, complete documentation, prototypes and full production.

### Our Engineering Department's Capabilities Include:

- PCB Design & Layout
- Flex & Rigid-Flex Circuit Design
- Battery Pack Design & Development
- Cable Assembly Application Design
- Custom Motor Programming & Configuration
- Flexible Heater Design & Development
- Human-Machine Interface Design
- Software & Firmware Development
- Electronic Design
- CNC 3D .stp Files



*In-House Engineering and Design Services*

## INVENTORY STOCKING

Epec Engineered Technologies has long been recognized as a market leader for customized electronic product solutions. Since 2001, Epec has developed world-class capabilities in the areas of sourcing, supply chain, manufacturing and inspection. These have enabled us to provide market-leading, independent electronic supply chain and logistics services.

With this breadth of capabilities Epec is uniquely placed to drive down your real acquisition and operating costs, reduce lead times, and provide a leading edge on technology products.

### Kanban Programs

At our facility, we can manufacture and store inventories that can be available on a just in time (JIT) basis. We can accept releases via phone or email.

### Blanket Orders

Epec can manufacture and inventory your products at our facility to fulfill your manufacturing scheduling requirements.

### Consignment Stock

Epec can manufacture your products on a consignment basis. Inventory may be stocked at either your facility or at our warehouse.



*Climate Controlled Storage Facilities*

## VALUE-ADDED SERVICES

Epec Engineered Technologies not only provides you with the highest quality products, we also offer a number of value-added services to make your custom built electronics buying experience as convenient as possible.

We offer comprehensive services that can give your business a competitive edge by focusing on providing solutions based upon your production requirements. These services add value to your business by reducing labor and purchasing costs, while keeping your inventory costs in check.

# INDUSTRY LEADER IN HIGH-TECH QUICK TURN PCB SOLUTIONS

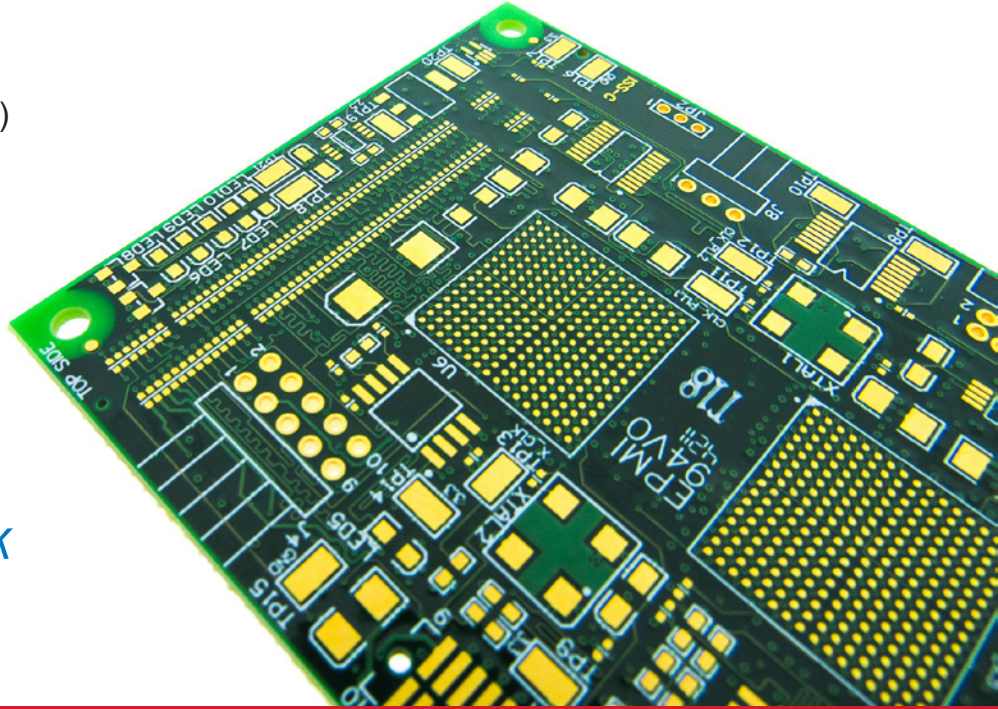
From a complex multi-layer board to a double sided surface mount design, our goal is to provide you a quality product that meets your requirements and is the most cost effective to manufacture. Our experience in IPC Class III standards, very stringent cleanliness requirements, heavy copper, and production tolerances allow us to provide our customers exactly what they need for their end product.

## Logistics:

- Lead Times In 1, 2, 3, 4, or 5 Days
- Production Quantities In As Little As 5 Days

## Capabilities:

- High Technology
- Up to 34 Layers
- Fine Lines & Traces (2 mil and below)
- Laser Drilling
- Laser Direct Imaging (LDI)
- High Density Interconnect (HDI)
- Via in Pad
- Blind & Buried Vias
- Controlled Impedance
- Controlled Dielectric
- Signal Integrity (SI)
- Military and ITAR



*“Your #1 Source For Quick Turn PCB Solutions.”*

## CONTACT US

Our knowledgeable staff has many years of experience in the industry. We welcome the opportunity to put our skills to work for you! Please contact us with any questions or requests.

### North American Headquarters

176 Samuel Barnet Boulevard  
New Bedford, MA 02745

### Contact Us By Phone or Email:

Toll Free: (888) 995-5171  
Email: [sales@epectec.com](mailto:sales@epectec.com)

### Stay Connected with Epec Engineered Technologies

Join our social community and keep in touch with all our latest technology investments, current news, upcoming events, and promotions.



ISO9001  
Certified



Visit Our Website [www.epectec.com](http://www.epectec.com)